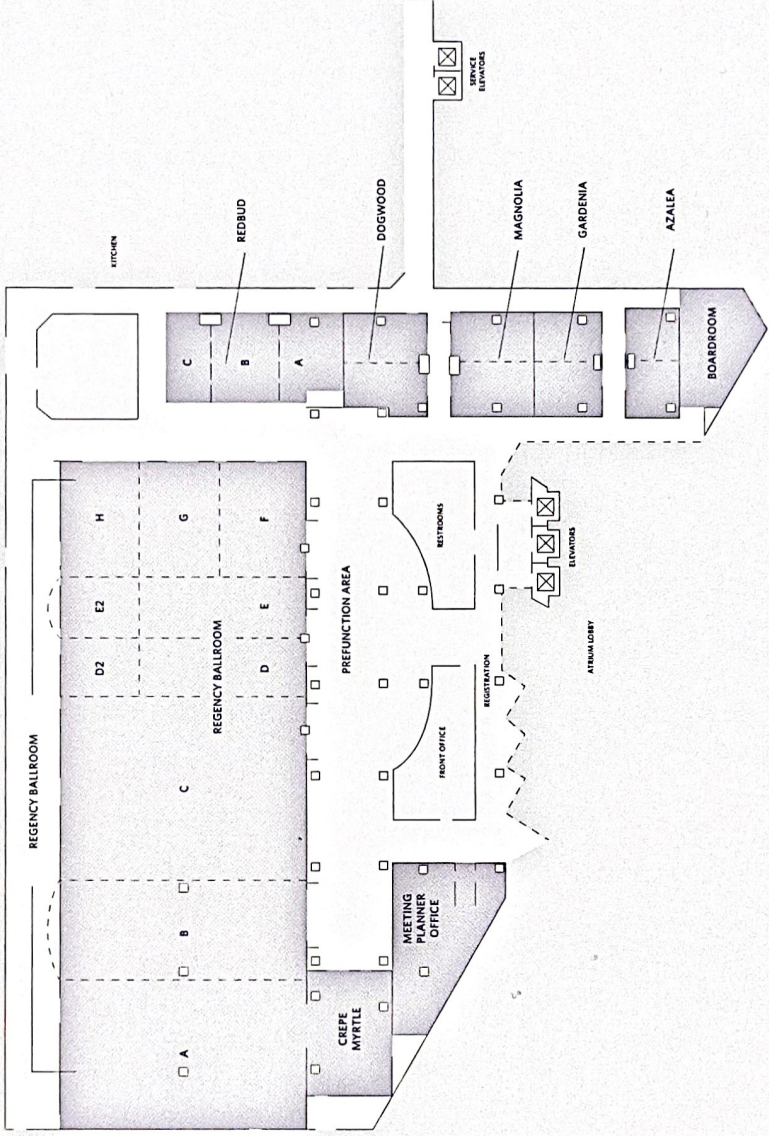
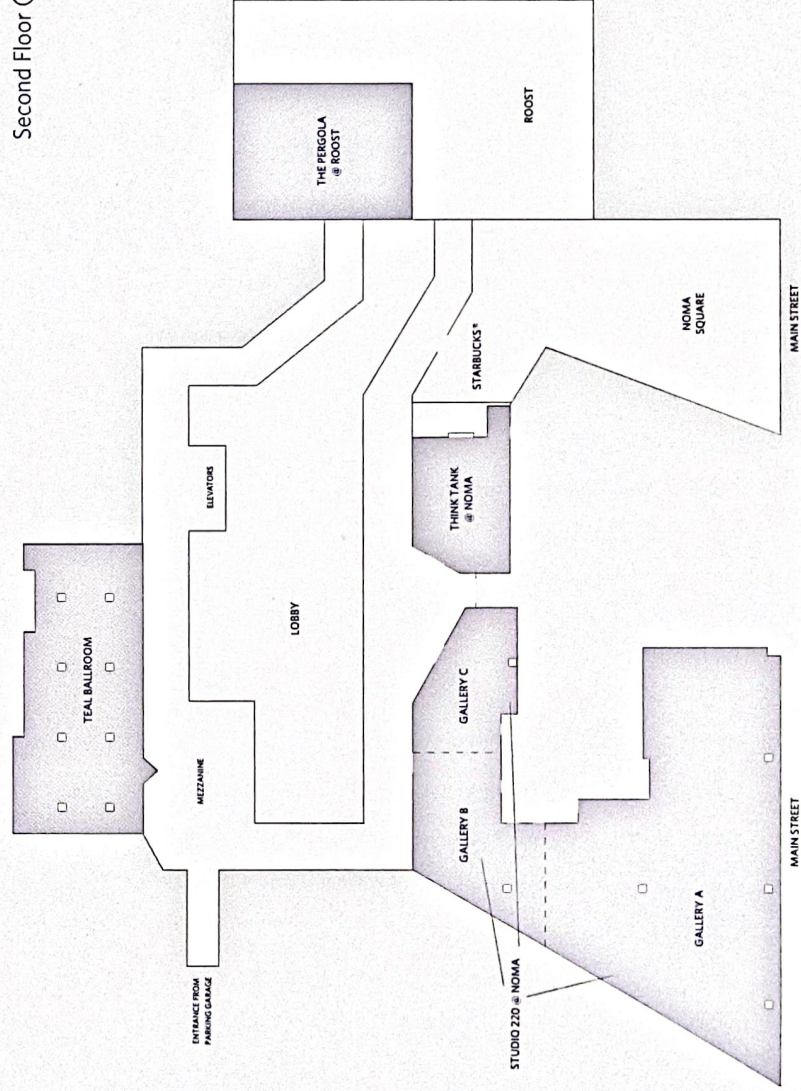




FLOOR PLAN
First Floor (Lobby Level)



Second Floor (Main Street Level)



CAPACITY CHART



Room Name	Room Dimensions L x W x H	Room Size Sq. Ft.	Banquet	Reception	Theater	Classroom	Boardroom	U-Shape	Hollow Square
First Floor (Lobby Level)									
REGENCY BALLROOM	197' x 73' x 14'	14,381	1,200	1,400	1,500	950	—	—	—
Sections A & B	72' x 73' x 14'	5,256	350	450	480	250	—	—	—
Section C, D, D2, E, E2, F, G, H	125' x 73' x 14'	9,125	760	1,000	1,100	600	—	—	—
Section C	53' x 73' x 14'	3,869	320	380	430	250	—	—	—
Section C, D, D2	72' x 73' x 14'	5,256	410	520	550	405	—	—	—
Section C, D, D2, E, E2	89' x 73' x 14'	6,497	480	640	700	513	—	—	—
Section D & E	36' x 48' x 14'	1,728	120	170	180	108	—	47	58
Section D, D2, E, E2	36' x 73' x 14'	2,628	200	260	250	180	—	—	—
Section F or G or H	35' x 24' x 14'	840	60	80	90	40	—	26	34
Section F & G or G & H	35' x 48' x 14'	1,680	120	160	160	108	—	60	84
Section H, E2	53' x 25' x 14'	1,325	90	130	130	54	—	42	52
Section F, G, H	35' x 73' x 14'	2,555	180	250	250	180	—	—	—
Section H, E2, D2	71' x 25' x 14'	1,775	130	170	160	90	—	—	—
Section F, G, E, D	72' x 48' x 14'	3,456	240	340	340	243	—	—	—
Section E, E2, F, G, H	53' x 73' x 14'	3,869	290	380	422	270	—	—	—
Section D, D2, E, E2, F, G, H	72' x 73' x 14'	5,256	420	520	550	405	—	—	—
GREPE MYRTLE	28' x 25' x 9'	950	70	80	100	40	20	30	36
BOARDROOM	—	567	—	—	—	—	16	—	—
AZALEA	34' x 16' x 9'	496	20	30	35	18	16	21	24
Azalea A or B	16' x 16' x 9'	256	10	10	15	—	6	—	—
GARDENIA	31' x 21' x 9'	651	30	50	50	30	20	21	24
Gardenia A or B	15' x 21' x 9'	315	15	20	25	15	10	—	—
MAGNOLIA	31' x 20' x 9'	620	50	40	50	30	20	21	24
Magnolia A or B	15' x 20' x 9'	300	30	20	30	—	10	—	—
DOGWOOD	28' x 24' x 9'	672	40	40	50	24	20	20	24
Dogwood A or B	14' x 24' x 9'	366	30	20	30	—	10	—	—
REDBUD	23' x 62' x 9'	1,426	110	140	150	60	—	48	54
Redbud A or B or C	23' x 21' x 9'	483	30	45	50	20	15	15	18
Redbud A & B or B & C	23' x 42' x 9'	966	80	80	100	48	20	30	36
PREFUNCTION	—	3,500+	—	300	—	—	—	—	—
Second Floor (Main Street Level)									
TEAL BALLROOM	40' x 90' x 9'	3,600+	200	350	200	140+	—	—	—
STUDIO 220 @ NOMA	—	5,978	300	650	450	200	—	—	—
Gallery A	—	4,237	250	500	400	175	—	—	—
Gallery B	—	1,052	60	100	60	45	25	30	25
Gallery C	—	689	40	50	50	30	15	20	15
THINK TANK @ NOMA	—	821	60	75	65	30	20	25	20
THE PERGOLA @ ROOST	25' x 58'	1,450	100	140	150	60	—	45	55
NOMA SQUARE	—	3,600	—	300	—	—	—	—	—