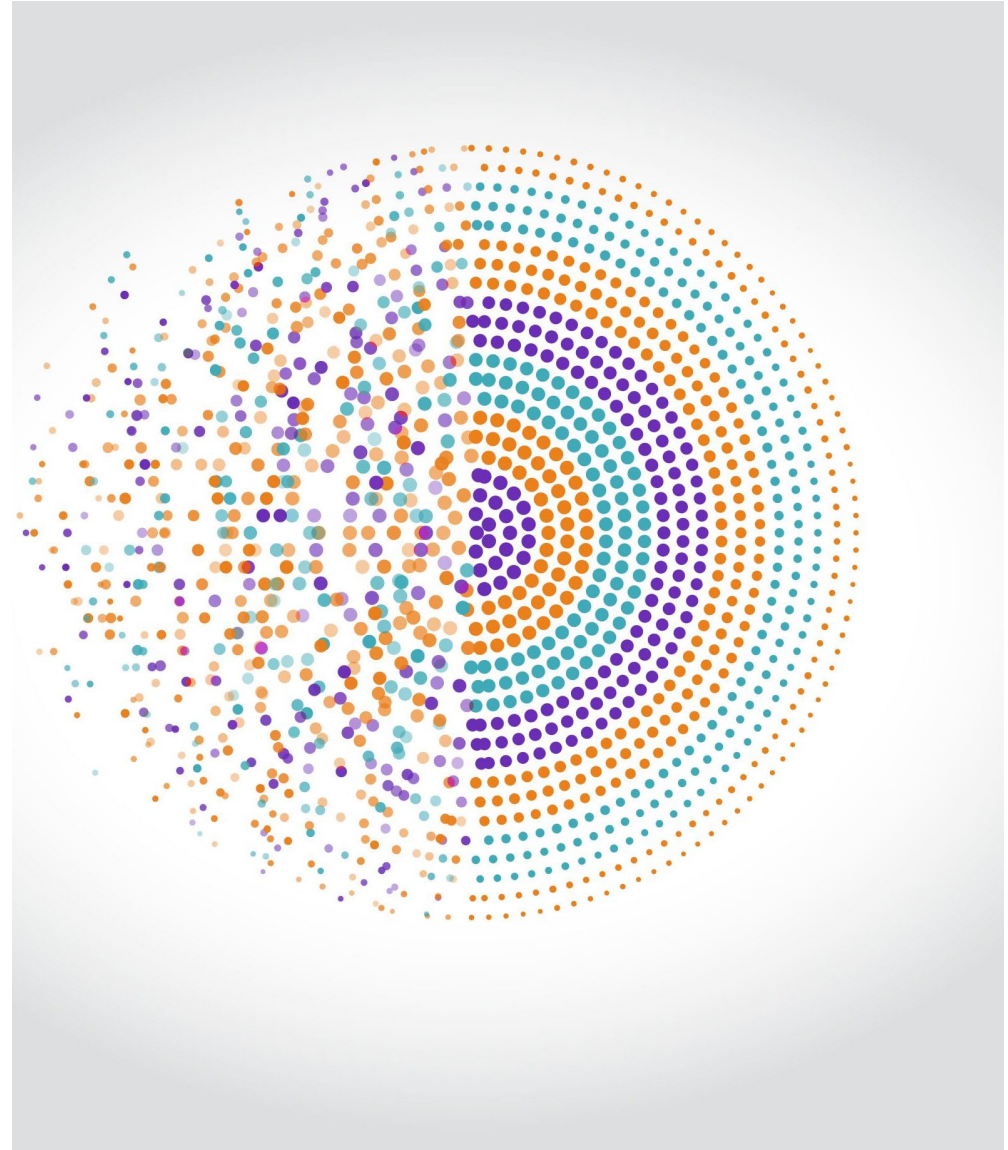




ENERGIZE SPRING 2021: DAY ONE & BEYOND!

*OTEL: Office of
Teaching Effectiveness
and Innovation*

Jan 4, 2021



Welcome! Drop your name and department into the chat!

WHAT TO EXPECT

Check on Spring 2021 attendance policy per guidelines

Advice for Syllabus

Exchange of ideas (first day activities and other elements for Spring 2021)

Other questions and resources to share

WHAT WAS THE BEST PART OF YOUR WINTER BREAK?



1. Outdoor time



2. Pets!!



3. Celebratory food and drink



4. Playing with kids!



5. Quiet time

WHAT WOULD YOU LIKE ADDRESSED?



Enter your word or
phrase in the chat



Ask a question



Answer a question!

FIRST DAY AND DIFFERING CLASS “ROOMS”

- <https://www.clemson.edu/otei/documents/firstdayotei1.pdf>
- Class models and other resources here:
<https://www.clemson.edu/otei/instructional-playbook.html>
- All Campus Study Space reservations will be made:
<https://libraries.clemson.edu/seats/>



ATTENDANCE FOR SPRING 2021



- It's a balancing act
- Review the dean's advice
- Check out the OTEI handout

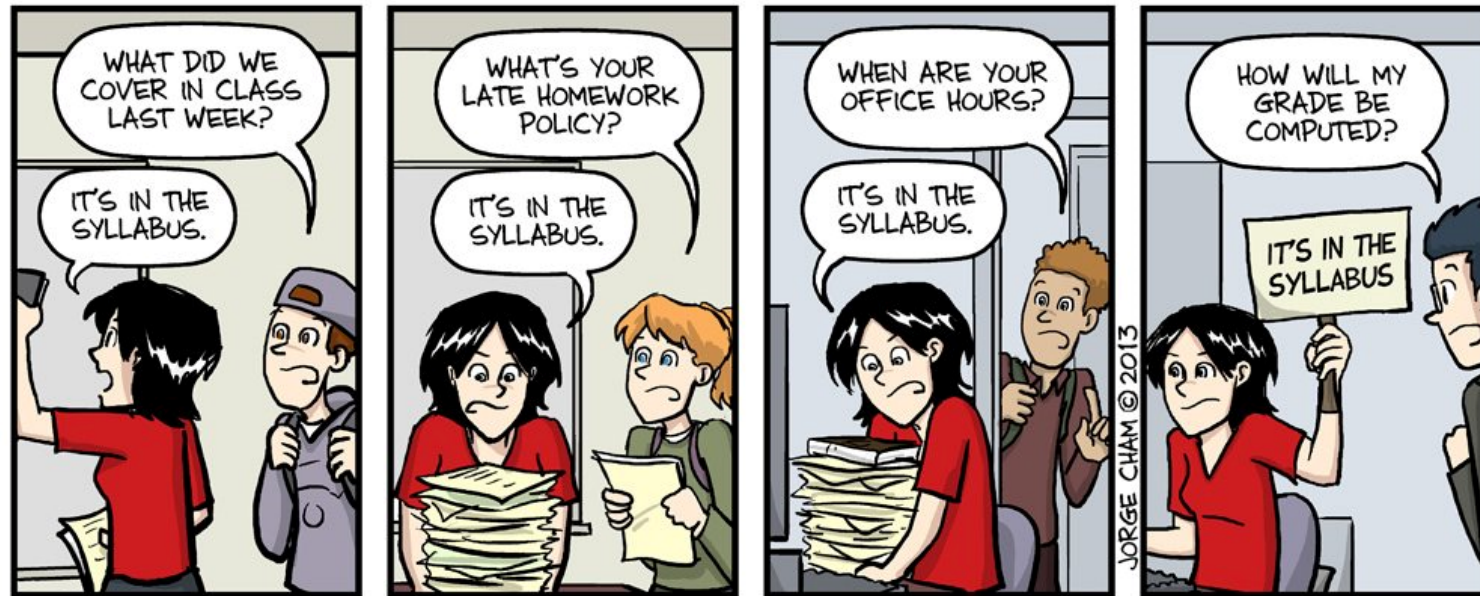
all located at <https://www.clemson.edu/otei/instructional-playbook.html>

Direct link to handout:

ATTENDANCE FOR SPRING 2021

- Online students only plan
- Equal access for any student with an excused absence
- Quarantine student access
- First day explanation of why it is important and beneficial to attend
- Plan for encouraging attendance





IT'S IN THE SYLLABUS

This message brought to you by every instructor that ever lived.

WWW.PHDCOMICS.COM

SYLLABUS

- Positive messaging is an inclusive practice
- Integrate with the Canvas Syllabus page
- Use Announcements effectively



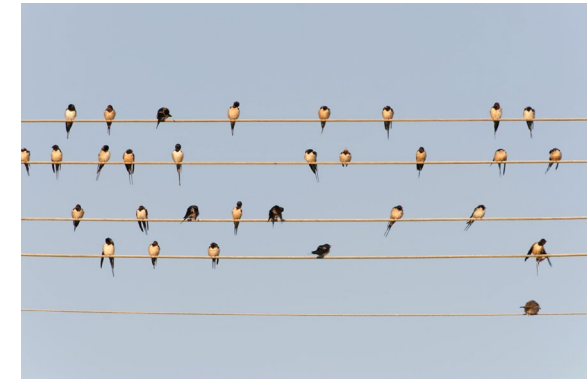
This Photo by Unknown Author is licensed under [CC BY-ND](https://creativecommons.org/licenses/by-nd/4.0/)

OTHER ITEMS

- Active learning and other pdfs to help
- Try out the virtual filter! Turn on your camera, go to “stop/start video” with a carrot and choose the filter option.

IN YOUR BREAKOUT ROOMS:

- In small groups, you will have 8 minutes
- GROUP LEADER is the person who lives the farthest away. (This person reports out a key point of the discussion, through the chat.)
- What are your concerns for the start of spring (attendance, participation)?
- Compare strategies for addressing attendance and participation
- Note other questions for the larger group



LAST ITEMS AND RESOURCES

- We will send this pdf and include all the links from the chats promptly
- Individual consultation sign up at “services” at <https://www.clemson.edu/otei/services-final.html>
- See resources at: <https://www.clemson.edu/otei/resource-page.html>

OTEI staff: Karen Bunch Franklin, Leslie Lewis, Cazembe Kennedy, Michelle Rogers, and Shannon Stefl